

High-Band Omni Antenna(폴형)

1710~2170 MHz, 2300 ~ 2400MHz / 2 dBi

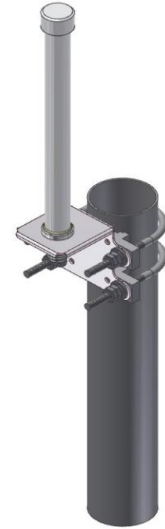
PIW-ST-02

i. Electrical Specification

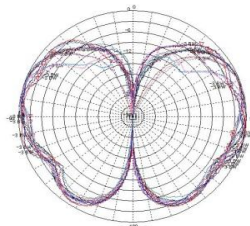
| 항 목 | | Omni Antenna | |
|-----------------------|------------|---------------------|-------------|
| Frequency Range (MHz) | | 1710 ~ 2170 | 2300 ~ 2400 |
| Polarization | | Vertical | |
| Band Width | | 460 MHz | 100 MHz |
| Gain | | ≥ 2 dBi | ≥ 2 dBi |
| Beam width | Horizontal | Omni | |
| | Vertical | ≥ 50° | ≥ 30° |
| F-B ratio | | - | |
| VSWR | | 1 : 1.7 | 1 : 1.7 |
| Impedance | | 50 Ω | |
| IMD (3rd) | | ≤ -140dBc @ 2x37dBm | |
| IMD (5th) | | ≤ -160dBc @ 2x37dBm | |
| Maximum input power | | 50 W | |

ii. Mechanical Specification

| | |
|----------------------------|----------------|
| Radom Dimension (D x H) | Ø19 x 86 mm |
| Weight (Exclude bracket) | ≤ 0.08 kg |
| Connector Type | N-J (Female) |
| Type | Open Type |
| Radiator Material | Copper |
| Radome Material | ASA |
| Radome Color | White |
| Temperature | -40 °C ~ 70 °C |
| Packing Size (H x W x D) | - |
| Packing Weight | - |



iii. Radiation Pattern



Vertical Pattern